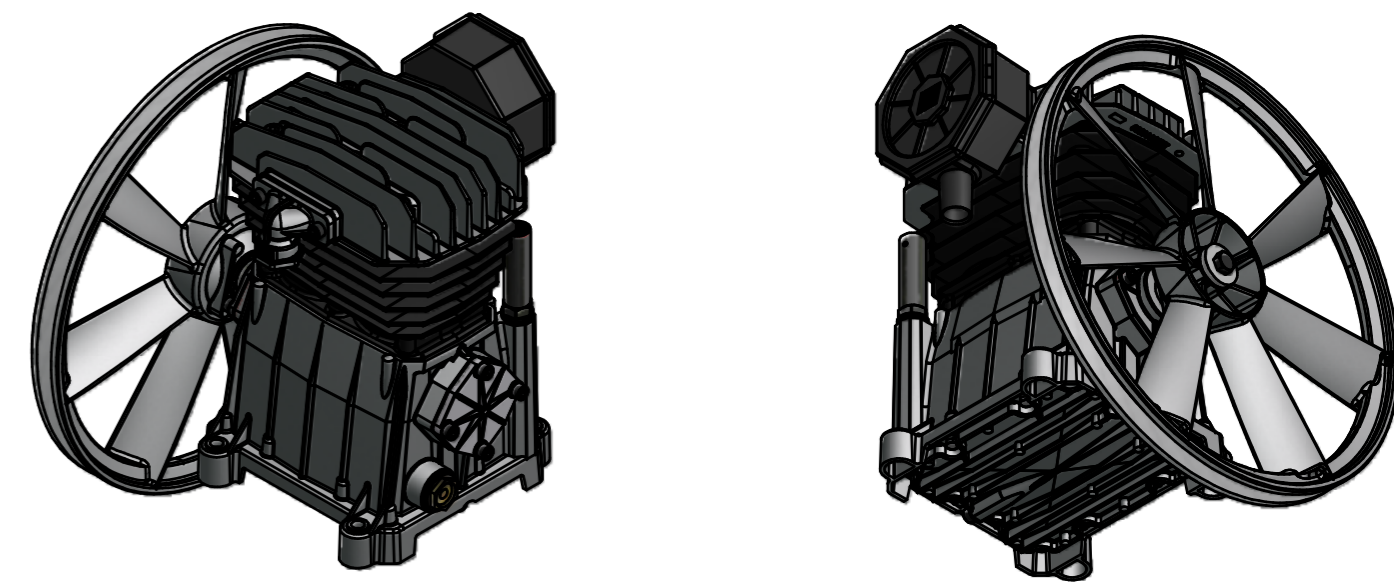
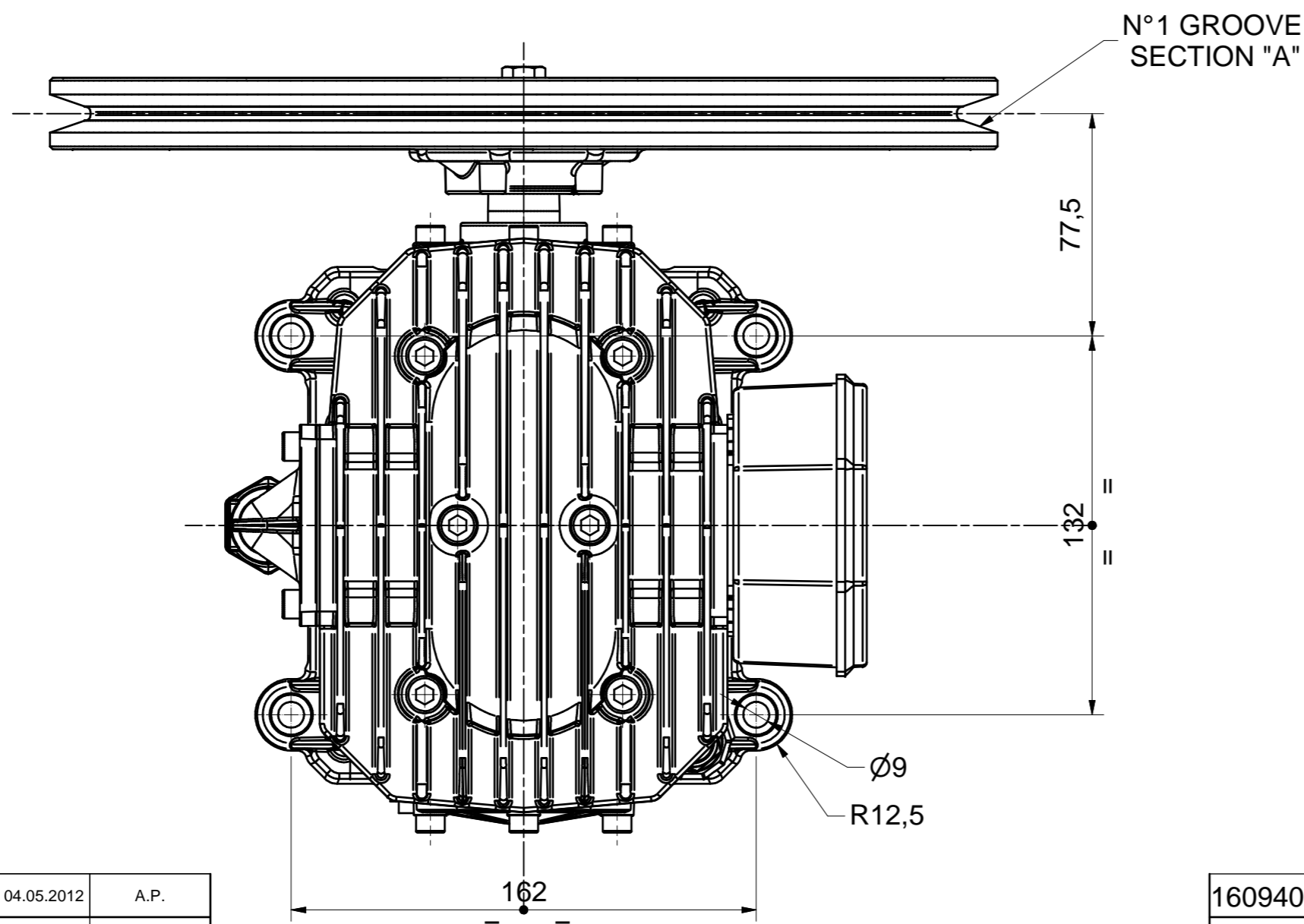
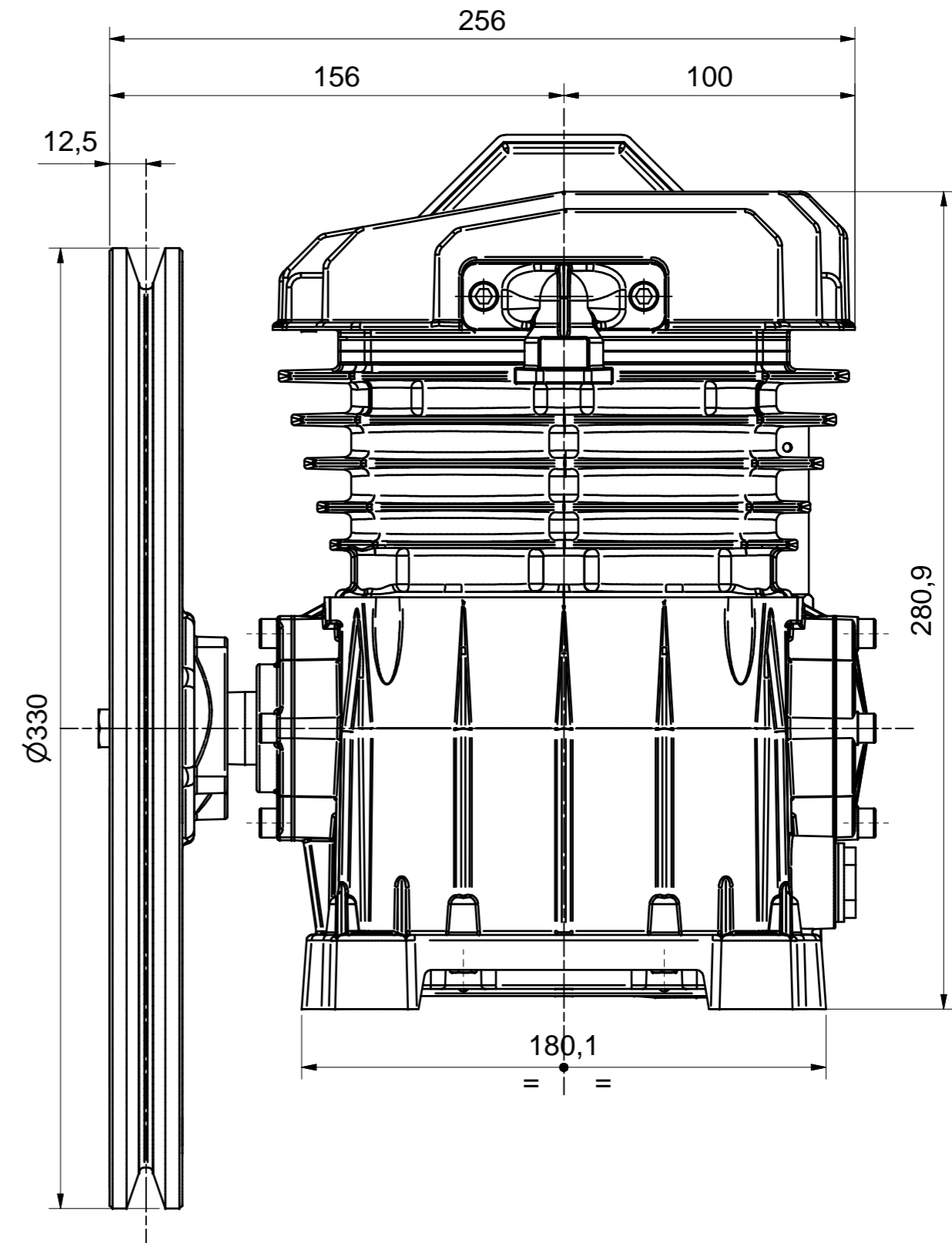
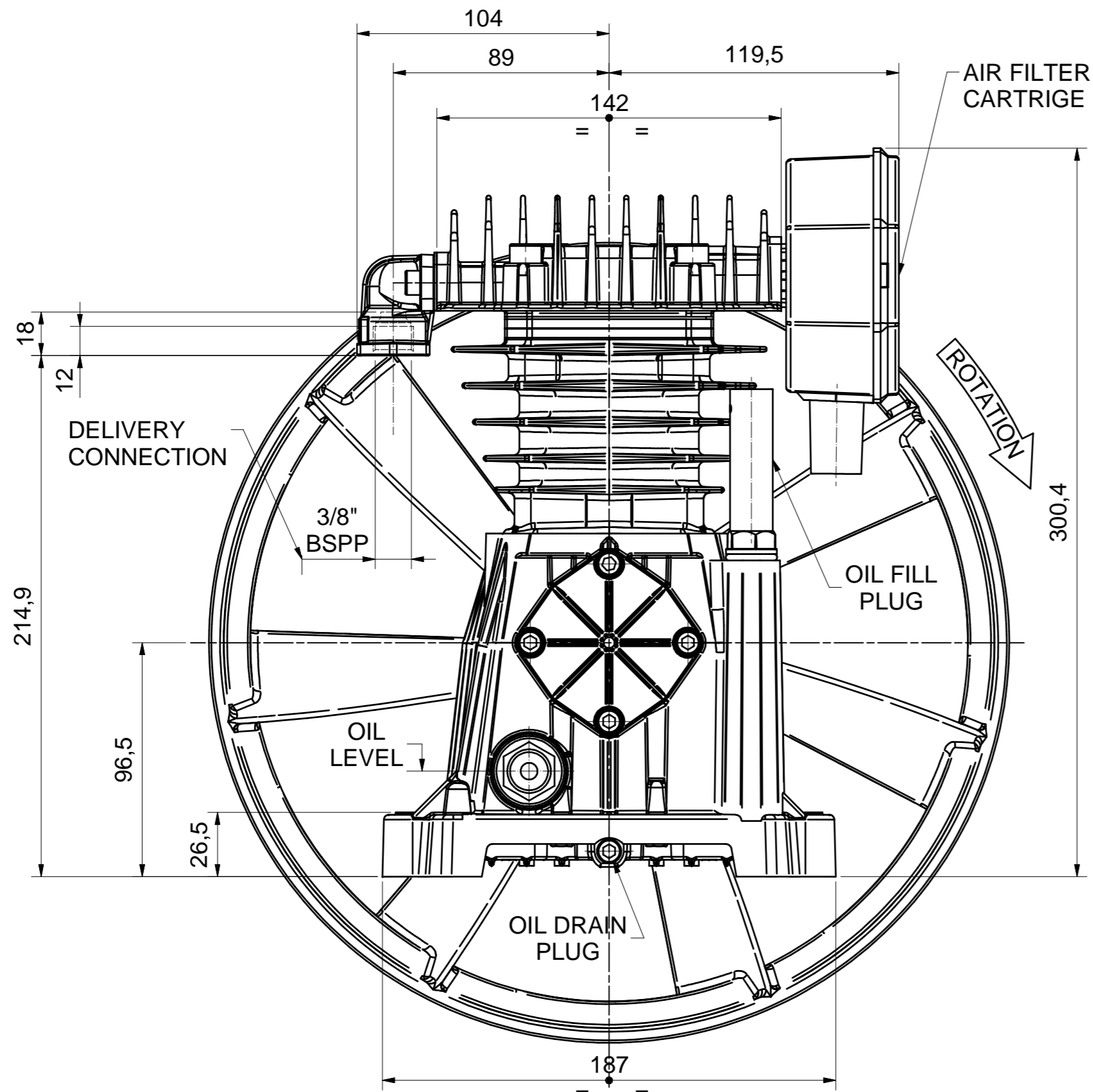


CONFIDENTIAL: This document is our property and shall not, without our permission, be altered, copied, used for manufacturing or communicated to any other person or company.



MECHANICAL PARAMETERS				
N° OF CYLINDERS	STAGES	DISPLACEMENT	FLYWHEEL DIAMETER	WEIGHT (W/O OIL)
[N°]	[N°]	[cm ³]	[mm]	[kg]
2	1	236.9	330	9.1
Tolerances, if not indicated, according to:		Mach.surf./Holes		
STANDARD CLASS		1350K - m		
Name PAT24/A29/NS12 3/8" BSP-PUMP DIMENSIONS				Security Class
Material				1102 K / 2
Treatment				INV
Scale	1:2	Family	A2 Compare	Drawing owner
Drawn by	A.PAGLIARIN	Blank nr.	Replaces	ITK
STATUS	Dwg.Ver. 00	Blank wt	Kg Fini wt.	9,378 Kg
Des checked.	Prod checked.	Approved	Date	05.04.2012
1609402002				00
Parent 3D model		Ed. Version 3D		APPROVED
N001047				Sheet 1 / 1

00	FIRST RELEASE	04.05.2012	A.P.
Ed	Position	Modified from	Intr./Appd.